



INSTALLATION GUIDE

SWB007 Kit Includes



SWB007



On/Off Gasket



Magnetic Mount (optional)



INSTALLING A BATTERY POWERED DEVICE FOR THE FIRST TIME? PLEASE CALL (888) 726-3511

STEP 1 Search and download the Sarekon Installation App from Google Play or Apple App Store before beginning. Search “Sarekon Installation” or scan the QR Code provided.

STEP 2 Find a suitable mounting location for the SWB007 device *inside the vehicle*. Zip ties and Velcro are provided for this purpose. The device should have a direct line of sight to the sky, no metal directly above. **Gasket Side Faces Down.**

Recommended placement options include:

- under vehicle dash
- under vehicle seats
- above the glove box area (not in the glove box)
- under center console

Note: Poor placement of the device, such as under metal, will result in poor GPS performance and a substantial decrease in battery life.

STEP 3 Hold down the “On” button on the bottom of the device for seven seconds until the red LED on the side of the device is solid (not flashing), then release.

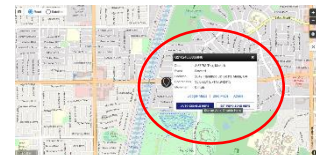


The red LED will turn Off automatically once the device has sent in its first message. This process can take up to fifteen minutes

STEP 4 Remove the on/off gasket. The gasket is no longer required once you have received a message from the device.

STEP 5 Secure the device inside the vehicle with care not to use adhesive or Velcro over the on/off pin area. Proceed with installation app step-by-step instructions to verify proper installation. Or, to check manually, Proceed to **STEP 6**

STEP 6 Confirm the LED lights on the device are off. Check the device history online to confirm message receipt from the device with accurate location reported. Once the system receives a message, the device has been successfully activated.



TROUBLESHOOTING (If no message has been received)

- Drive the vehicle briefly down the street and recheck to see if a message has been received.
- Or, initiate a device reset by performing an Off-On-Off-On sequence.
 - a. Turn device off by holding down “Off” side of gasket for seven seconds. The LED will turn off
 - b. Turn device back on by holding “On” side of gasket for seven seconds. LED should move to solid state.
 - c. While the LED is solid, turn the device back off by holding down “Off” side on gasket for seven seconds.
 - d. Turn device back on by holding “On” side of gasket for seven seconds. LED should move to solid state. This should initiate a “Boot” event once the GPS has acquired lock.

